

Overview



MAG 8000 is a comprehensive meter which intelligent information and high performance measurement as well as the easy to install concept take cost of ownership and customer service to a new level for water meter.

Benefits

Easy to install

- Compact or remote solution with factory mounted cable and customer setting from factory
- IP68/NEMA 6P enclosure. Sensor can be buried.
- Flexible power supply - internal or external battery pack or mains power supply with battery back-up possibilities
- Superior measurement
- Down to 0.2 % maximum uncertainty
- OIML R 49 type approval
- FM Fire Service Approval
- Bi-directional measurement

Long lasting performance/Low cost of Ownership

- No moving parts means less wear and tear.
- Up to 6 to 10 years maintenance-free operation in typical revenue application
- Robust construction built for the application

Intelligent information, easy to access

- Embedded self-testing and alarm/fault detection feature
- Internal data logger
- Advanced statistics and diagnostics
- Various Add-on communication modules

Application

The following MAG 8000 versions are available as stand-alone water meters:

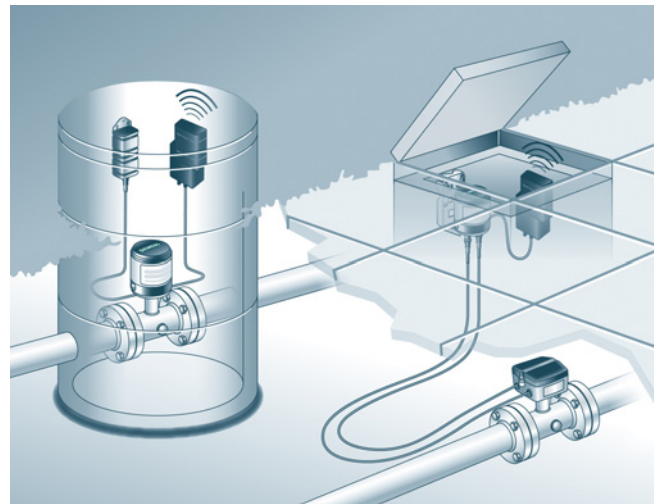
- MAG 8000 (7ME6810) for abstraction and distribution network
- MAG 8000 CT (7ME6820) for revenue and bulk metering

Design

MAG 8000 is designed to minimize power consumption.

The product program consists of

- Basic and advanced version
- Sensor sizes from DN 25 to 1200 (1" to 48")
- Compact and remote installation in IP68/NEMA 6P enclosure and factory-mounted cable
- SIMATIC PDM and Flow Tool PC configuration softwares



Modbus/Encoder module

Flow Measurement

SITRANS FM (electromagnetic)

Flow sensors

Battery-operated water meter MAG 8000

Function

MAG 8000 is a microprocessor-based water meter with graphical display and key for optimum customer operation and information on site. The transmitter drives the magnetic field in the sensor, evaluates the flow signal from the sensor and calculates the volume passing through. It delivers the required information via the integrated pulse output or communication interfaces as part of a system solution. Its intelligent functionality, information and diagnostic ensure optimum meter performance and information to optimize water supply and billing.

The SIMATIC PDM tool gives the possibility of testing and verifying the flowmeter on site and creating a printed "Qualification Certificate" with all specific data that define the quality status of the measurement.

The Qualification Certificate consists of two pages with information about the actual status of the sensor:

Part 1 provides general settings, sensor and battery info, totalizer values and pulse output settings.

Part 2 provides detailed information about electronic and sensor functionality and a main parameter list for evaluating the functionality of the MAG 8000 water meter.



MAG 8000 can be ordered as a Basic or an Advanced version.



SIMATIC PDM

For more details about SIMATIC PDM please go to chapter 8 "Digitalization and Communication".

| Features/Version | MAG 8000 Basic | MAG 8000 Advanced |
|---|-------------------------|---|
| Measuring frequency in battery power mode (Manually selected) ¹⁾ | 1/15 or 1/30 or 1/60 Hz | from 6.25 to 1/60 Hz depending of sensor size |
| Output MAG 8000 | 2 FW/RV/AI/CA | 2 FW/RV/AI/CA |
| Communication | Add-on | Add-on |
| Data logger | Yes | Yes |
| Insulation test | Yes | Yes |
| Leakage detection | No | Yes |
| Meter utilization | No | Yes |
| Statistics | No | Yes |
| Tariff | No | Yes |
| Settle date (Revenue) | No | Yes |

¹⁾ Excitation frequency settings with mains power supply, see technical specifications for each version:

Some information is accessible via the display whereas all information is accessible via the IrDA communication interface with the PDM software. Data and parameters are registered in a EEPROM. They can all be read, but changing the information demands a software password or a hardware key attached to the printed circuit board.

Technical specifications

| Transmitter | |
|-------------------------------|---|
| Installation | Compact (integral) Remote with factory-mounted cable 5, 10, 20 or 30 m (16.4, 32.8, 65.6 or 98.4 ft) |
| Enclosure | Stainless steel top housing (AISI 316) and coated brass bottom. Remote wall mount bracket in stainless steel (AISI 304). |
| Cable entries | 2 × M20 (one gland for one cable of size 6 ... 8 mm (0.02 ... 0.026 ft) is included in the standard delivery) |
| Display | Display with 8 digits for main information Index, menu and status symbols for dedicated information |
| Resolution | Totalized information can be displayed with 1, 2 or 3 decimals or automatic adjustment (default) |
| Flow unit | |
| Europe | Volume in m ³ and flow rate in m ³ /h |
| US | Volume in Gallon and flow rate in GPM |
| Australia | Volume in Mi and flow rate as MI/d |
| Optional display units | Volume: m ³ × 100, l × 100, G × 100, G × 1000, MG, CF × 100, CF × 1000, AF, Al, kl, BBL42 Flow: m ³ /min, m ³ /d, l/s, l/min, GPS, GPH, GPD, MGD, CFS, CFM, CFH, BBL42/s, BBL42/min, BBL42/h, BBL42/d |
| Digital output | 2 passive outputs (MOS), individual galvanically isolated Maximum load ± 35 V DC, 50 mA short circuit protected |
| Output A function | Programmable as pulse volume – forward – reverse – forward/net – reverse/net |
| Output B function | Programmable as pulse volume (like output A), alarm |
| Output | Max. pulse rate of 50 Hz (pulse B) and 100 Hz (pulse A), pulse width of 5, 10, 50, 100, 500 ms |

| Transmitter | |
|---------------------------|--|
| Communication | IrDA: Standard integrated infrared communication interface with Modbus RTU protocol |
| Add-on modules | <ul style="list-style-type: none"> RS 232 serial interface with Modbus RTU (Rx/Tx/GND), point to point with max. 15 m cable RS 485 serial interface with Modbus RTU (+/-/GND), multidrop with up to 32 devices with max. 1000 m cable Encoder interface module (for Itron 200WP) "Sensus protocol" 3G/UMTS module with or without analog input cable |
| Power supply | Auto detection of power source with display symbol for operation power |
| Internal battery pack | 1 D-Cell 3.6 V/16.5 Ah 2 D-Cell 3.6 V/33 Ah |
| External battery pack | 4 D-Cell 3.6 V/66 Ah |
| Mains power supply | 12 ... 24 V AC/DC (10 ... 32 V) 2 VA 115 ... 230 V AC (85 ... 264 V) 2 VA Both mains power supply systems are upgradable for battery backup via internal D-Cell (3.6 V 16.5 Ah) or external battery pack. |
| Cable | 3 m (9.8 ft) for external connection to mains supply (without cable plug) |

Flow Measurement

SITRANS FM (electromagnetic)

Flow sensors

Battery-operated water meter MAG 8000

Technical specifications (continued)

| Features | |
|--|---|
| Application identification | Tag number up to 15 characters |
| Time and date | Device embedded Real Time Clock (Synchronization with NTP server if 3G/UMTS module connected) |
| Totalizer | |
| MAG 8000 | Totalizer 1 and Totalizer 2: Configurable to Forward, Reverse and Bidirectional netflow Totalizer 3: (following totalizer 1 setting) resettable via display key |
| Measurement | |
| Low flow cut-off | Cut-off at 15 mm/s ¹⁾ |
| • 7ME6810 | Cut-off at 15 mm/s ¹⁾ |
| • 7ME6820 | |
| Empty pipe detection | Symbolised in display |
| Data logger | Logging of 26 records: selectable as daily, weekly or monthly logging |
| Alarm | Active alarm is indicated on the display. |
| Data protection | All data stored in an EEPROM. Totalizers 1 and 2 are backed up every 10 min, statistic every hour and power consumption and temperature measurement every 4 hours. Password protection of all parameters and hardware protection of calibration and revenue parameters. |
| Battery power management | Optimal battery information on remaining capacity. Calculated capacity includes all consuming elements and available battery capacity is adjusted related to change in ambient temperature. Numbers of power-ups Date and time registered for first and last time power alarm. |
| Diagnostic | |
| Continuous self test including | Coil current to drive the magnetic field Signal input circuit Data calculation, handling and storing |
| Alarm statistics and logging for fault analyzing | Electrode impedance to check actual media contact Flow simulation to check pulse and communication signal chain for correct scaling Number of sensor measurements (excitations) Transmitter temperature (battery capacity calculation) Low impedance alarm for change in media Flow alarm when defined high flow exceeds Verification mode for fast measure performance check |
| Insulation test | Test of signal immunity against disturbance and bad installation. Test interval is selectable and measurement is interrupted during the test period of 4 min. |

| Features | |
|---|---|
| Leakage detection (only Advanced version) | Monitoring the lowest flow or volume during selected time window within 24 hours. Leakage is detected over a selectable period where monitored value exceed the possible leakage level. Min. and max. values are stored with date registration. Last store value visible on the display. |
| Meter Utilization (only Advanced version) | 6 registers for monitoring total time the meter has operated in different flow intervals. Registered intervals are free selectable as % of Q _n (Q3). |
| Tariff (only Advanced version) | 6 tariff registers count the volume delivered within the selected tariff windows, based on time of day or flow rates or a combination. Tariff can also be used for consumption profile where consumption is related to different time intervals or flow rates. Tariff values visible on the display. |
| Settling date (only Advanced version) | On a predefined date the totalizer 1 index value is stored. Old values are stored to show the latest two totalized 1 index values. Settling values visible on the display. |
| Statistic (only Advanced version) | Min. flow rate with time and date registration Max. flow rate with time and date registration Min. daily consumption with date registration Max. daily consumption with date registration Latest 7 days total and daily consumption Actual month consumption Latest month consumption |
| PC Configuration Software PDM | <ul style="list-style-type: none"> • Meter configuration – online and offline mode • Own parameter settings • Parameter documentation • Print and export of data and parameters PDM 9.0/9.1 Service Pack 1 |

¹⁾ Siemens warrants the measurement accuracy down to a flow velocity of 15 mm/s. For a flow velocity below 15 mm/s, we don't warrant the measurement accuracy.

Technical specifications (continued)

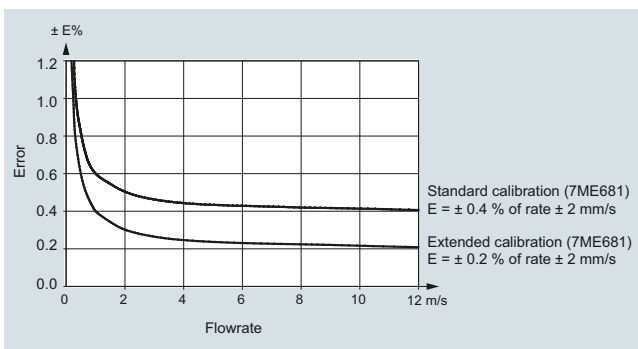
MAG 8000 water meter uncertainty

To ensure continuous accurate measurement, flowmeters must be calibrated. The calibration is conducted at Siemens flow facilities with traceable instruments referring directly to the physical unit of measurement according to the International System of Units (SI).

Therefore, the calibration certificate ensures recognition of the test results worldwide, including the US (NIST traceability).

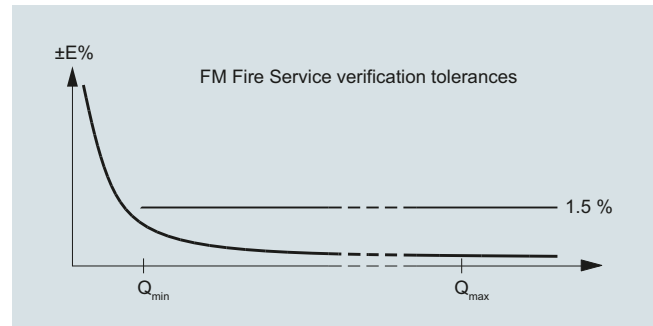
Siemens offers accredited calibrations assured to ISO 17025 in the flow range from 0.0001 m³/h to 10 000 m³/h. Siemens Flow Instruments accredited laboratories are recognized by ILAC MRA (International Laboratory Accreditation Corporation - Mutual Recognition Arrangement) ensuring international traceability and recognition of the test results worldwide.

The selected calibration determines the accuracy of the meter. A standard calibration results in max. $\pm 0.4\%$ uncertainty and an extended calibration $\pm 0.2\%$. A calibration certificate follows every sensor and calibration data are stored in the meter unit.



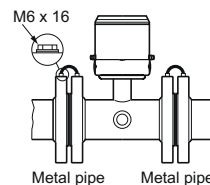
MAG 8000 (7ME6810) for Fire Service applications

MAG 8000 (7ME6810) is FM Fire Service approved for automatic fire protection systems according to the Fire Service Meters Standard, Class Number 1044. The approval is applicable for the sizes DN 50, DN 80, DN 100, DN 150, DN 200, DN 250, and DN 300 (2", 3", 4", 6", 8", 10", and 12") with ANSI B16.5 Class 150 flanges. The FM Fire Service approved product can be ordered via the Z-options P20, P21 and P22.



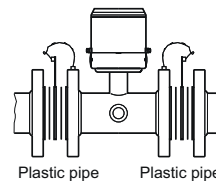
Grounding

The sensor body must be grounded using grounding straps and/or grounding rings to protect the flow signal against stray electrical noise. This ensures that the noise is carried through the sensor body and a noise-free measuring area within the sensor body. For MAG 8000 Irrigation grounding rings on both sides are factory-mounted.



Metal pipes

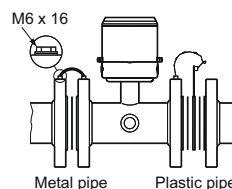
On metal pipes, connect the straps to both flanges.



Plastic pipes

On plastic pipes and lined metal pipes, optional grounding rings must be used at both ends.

Grounding rings has to be ordered separately see "grounding ring kit"



Combination of metal and plastic pipes

A combination of metal and plastic requires straps for metal pipe and grounding rings for plastic pipe.

Flow Measurement

SITRANS FM (electromagnetic)

Flow sensors

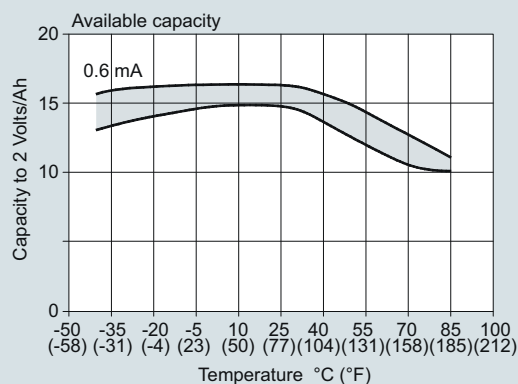
Battery-operated water meter MAG 8000

Technical specifications (continued)

Battery operation time and calculation

The battery operation time depends on the connected battery pack as well as the operation condition of the meter.

MAG 8000 calculates the remaining capacity every 4 hours and includes all consuming elements. Calculation compensates for temperature influence on battery capacity.



The graphic shows the effect from other temperatures. A variation in temperature from 15 °C to 55 °C (59 to 131 °F) reduces the capacity by 17 % in the table from 15 Ah to 12.5 Ah.

At typical revenue scenario of expected battery operation time can be seen in the table below.

The measurement for calculating the rest capacity of the battery life time is only completed if the system has no active fatal faults or the empty pipe is active. Maximum battery specification is 10 years operation.

Scenario - Revenue application

| | |
|---------------------|--|
| Output A | Pulse rate max. 10 Hz |
| Output B | Alarm or call-up |
| Meter dialog | 1 hour per month |
| Add-com | None |
| Temperature profile | <ul style="list-style-type: none"> • 5 % at 0 °C (32 °F) • 80 % at 15 °C (59 °F) • 15 % at 50 °C (122 °F) |

Battery lifetime (subject to the assumptions mentioned above)

MAG 8000 for abstraction and distribution network applications (7ME6810) and MAG 8000 CT for revenue and bulk metering (7ME6820)

| Excitation frequency (24 h operation) | | 1/60 Hz | 1/30 Hz | 1/15 Hz | 1/5 Hz | 1.5625 Hz | 3.125 Hz | 6.25 Hz |
|---|----------------------------------|----------|----------|----------|-----------|-----------|----------|----------|
| 2 D-Cell battery 33 Ah Internal battery pack | DN 25 ... 150 (1" ... 6") | 9 years | 9 years | 7 years | 43 months | 8 months | 3 months | 2 months |
| | DN 200 ... 600 (8" ... 24") | 9 years | 6 years | 4 years | 22 months | 3 months | 1 month | N/A |
| | DN 700 ... 1200 (28" ... 48") | 7 years | 4 years | 2 years | 12 months | 1 months | N/A | N/A |
| 4 D-Cell battery 66 Ah External battery pack | DN 25 ... 150 (1" ... 68") | 15 years | 15 years | 14 years | 86 months | 16 months | 7 months | 4 months |
| | DN 200 ... 600 (8" ... 24") | 15 years | 13 years | 8 years | 44 months | 7 months | 3 months | N/A |
| | DN 700 ... 1200 (28" ... 48") | 14 years | 9 years | 5 years | 24 months | 3 months | N/A | N/A |

Typical battery lifetime scenario for MAG 8000 with 3G module

Transmission once a day and MAG 8000 factory settings

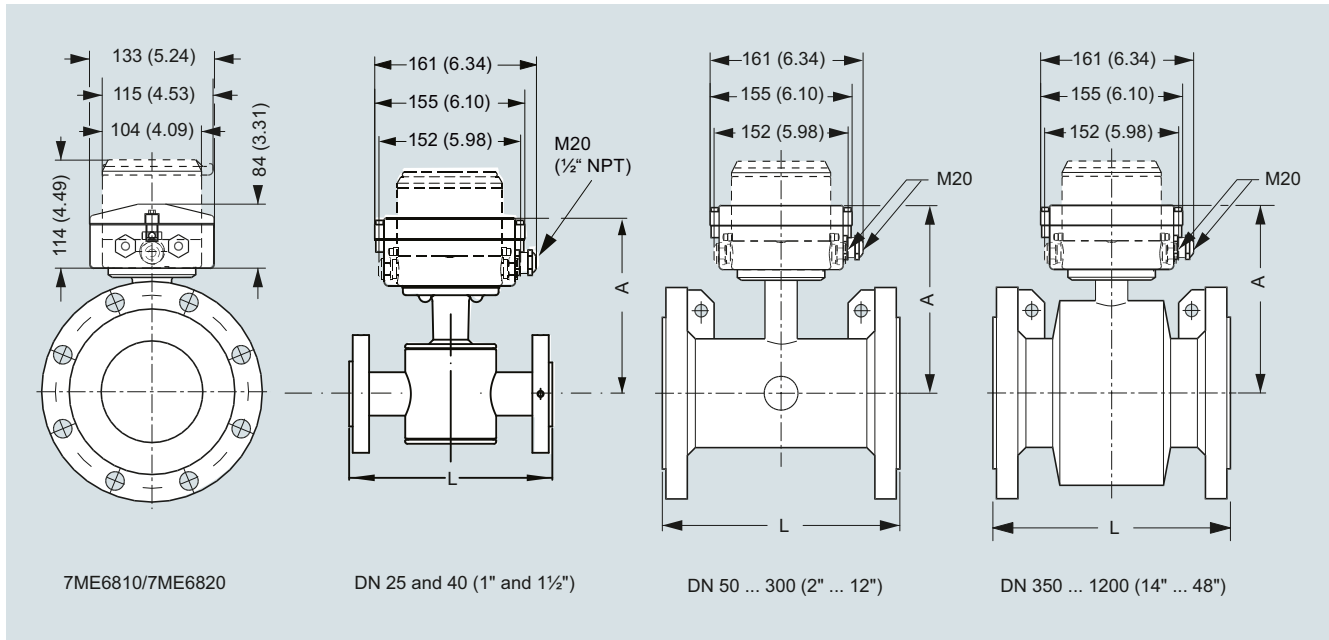
| | |
|--|---------------|
| 2 D-Cell battery 33 Ah Internal battery pack | 3 ... 4 years |
| 4 D-Cell battery 66 Ah External battery pack | 7 ... 8 years |

External battery pack can be used as battery backup for mains power supply (if two cable entries in one cable gland are needed, order cable glands with two entries, see accessories on page 3/141)

Serial RS 232/RS 485 add-on communication modules are designed for mains powered systems as the battery operation time will be reduced. At 1 hour communication per month (all meter data collected 2 times per day) and the module is connected, the operation time is reduced to:

- RS 232:
 - Switched on constantly:
 - 6.4 months for 2 D-cell internal battery pack / 12.8 months for 4 D-cell ext. battery pack
 - Switched on 2 s/day:
 - 39 months for 2 D-cell internal battery pack / 78 months for 4 D-cell ext. battery pack
- RS 485:
 - With the termination resistor on:
 - 2.3 months for 2 D-cell internal battery pack / 4.6 months for 4 D-cell ext. battery pack
 - With the termination resistor off:
 - 39 months for 2 D-cell internal battery pack / 78 months for 4 D-cell ext. battery pack, in case the entire communication time is less than 4 hours/day

Dimensional drawings



Dimensions in mm (inch)

| Nominal DN size | A | L, lengths ¹⁾ | | | | | | | Weight ²⁾ | |
|-----------------|------------|--------------------------|---|--------------------|------------------------|------------------|----------------------|---------|----------------------|------|
| | | EN 1092-1 PN 10 | EN 1092-1 PN 16/ PN 16 non-PED | EN 1092-1 PN 40 | ANSI 16.5 Class 150 | AS 4087 PN 16 | AWA C-207 Class D | AS 2129 | kg | lb |
| mm (inch) | mm (inch) | mm | mm | mm | inch | mm | mm | mm | | |
| 25 (1) | 188 (7.4) | - | - | 200 | 7.9 | 200 | - | 200 | 6 | 13 |
| 40 (1½) | 203 (8.0) | - | - | 200 | 7.9 | 200 | - | 200 | 9 | 20 |
| 50 (2) | 178 (7.0) | - | 200 | - | 7.9 | 200 | - | - | 11 | 25 |
| 65 (2½) | 181 (7.1) | - | 200 | - | 7.9 | 200 | - | - | 13 | 29 |
| 80 (3) | 191 (7.5) | - | 200 | - | 7.9 | 200 | - | - | 15 | 34 |
| 100 (4) | 197 (7.8) | - | 250 | - | 9.8 | 250 | - | - | 17 | 38 |
| 125 (5) | 210 (8.3) | - | 250 | - | 9.8 | 250 | - | 250 | 22 | 50 |
| 150 (6) | 224 (8.8) | - | 300 | - | 11.8 | 300 | - | - | 28 | 63 |
| 200 (8) | 249 (9.8) | 350 | 350 | - | 13.8 | 350 | - | - | 50 | 113 |
| 250 (10) | 276 (10.9) | 450 | 450 | - | 17.7 | 450 | - | - | 71 | 160 |
| 300 (12) | 303 (11.9) | 500 | 500 | - | 19.7 | 500 | - | - | 88 | 198 |
| 350 (14) | 365 (14.4) | 550 | 550 | - | 21.7 | 550 | - | - | 127 | 279 |
| 400 (16) | 391 (15.4) | 600 | 600 | - | 23.6 | 600 | - | - | 145 | 318 |
| 450 (18) | 421 (16.6) | 600 | 600 | - | 23.6 | 600 | - | - | 175 | 384 |
| 500 (20) | 447 (17.6) | 600 | 600 | - | 23.6 | 600 | - | - | 225 | 494 |
| 600 (24) | 497 (19.6) | 600 | 600 | - | 23.6 | 600 | - | - | 340 | 747 |
| 700 (28) | 548 (21.6) | 700 | 875/700 | - | N/A | 700 | 700 | - | 316 | 694 |
| 750 (30) | 573 (22.6) | N/A | N/A | - | N/A | N/A | 750 | - | N/A | N/A |
| 800 (32) | 603 (23.7) | 800 | 1000/800 | - | N/A | 800 | 800 | - | 398 | 1045 |
| 900 (36) | 656 (25.8) | 900 | 1125/900 | - | N/A | 900 | 900 | - | 476 | 1045 |
| 1000 (40) | 708 (27.9) | 1000 | 1250/1000 | - | N/A | 1000 | 1000 | - | 602 | 1322 |
| 1050 (42) | 708 (27.9) | N/A | N/A | - | N/A | N/A | 1050 | - | N/A | N/A |
| 1100 (44) | 759 (29.9) | N/A | N/A | - | N/A | N/A | 1100 | - | N/A | N/A |
| 1200 (48) | 814 (32.0) | 1200 | 1500/1200 | - | N/A | 1200 | 1200 | - | 887 | 1996 |

¹⁾ Tolerances on built-in length: DN 15 to DN 200 (½" to 8"): +0/-3 mm (+0/-0.12"), DN 250 to DN 400 (10" to 16"): +0/-5 mm (+0/-0.20"), DN 450 to DN 600 (18" to 24"): +5/-5 mm (+0.20/-0.20"), DN 700 to DN 1200 (28" to 48"): +10/-10 mm (+0.39/-0.39").

²⁾ For remote version the sensor weight is reduced with 2 kg (4.5 lbs).

Flow Measurement

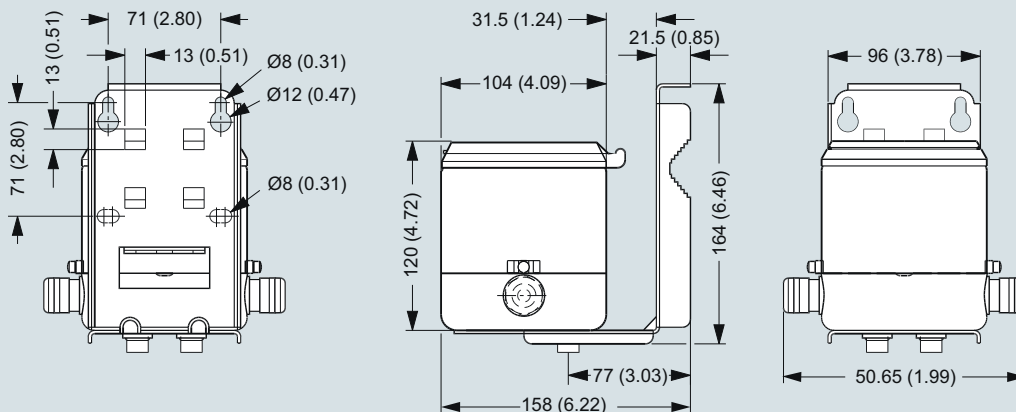
SITRANS FM (electromagnetic)

Flow sensors

Battery-operated water meter MAG 8000

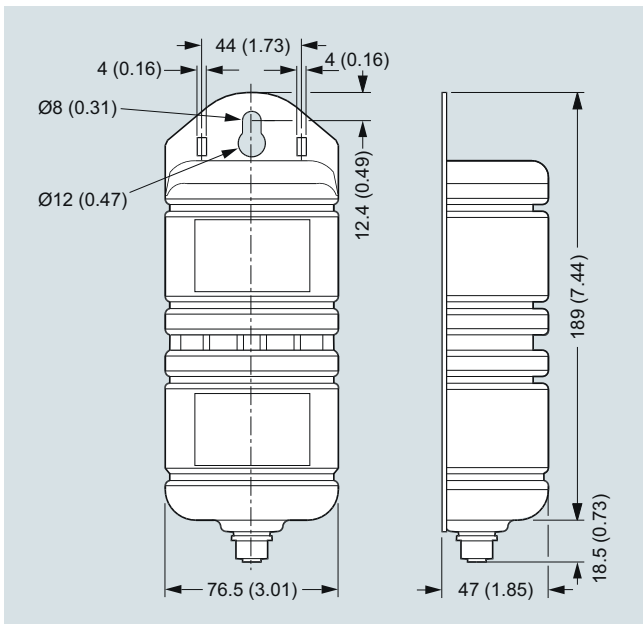
Dimensional drawings (continued)

Remote version



Dimensions in mm (inch), weight 3.5 kg (8 lbs)

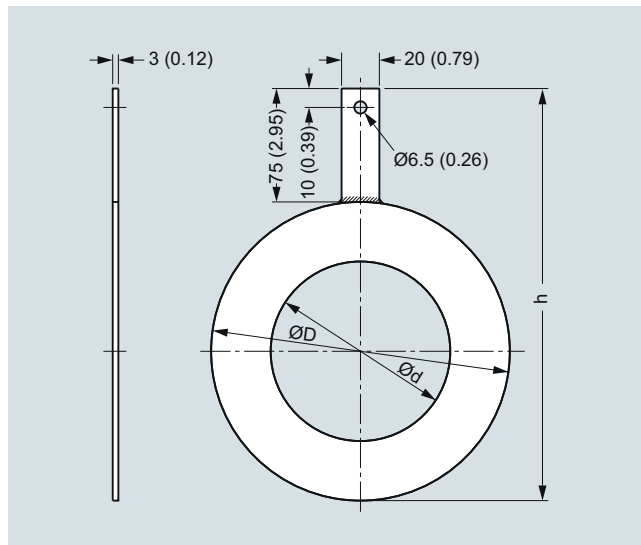
External battery pack



Dimensions in mm (inch), weight 2.0 kg (4.5 lbs)

Battery pack has to be mounted in upwards position to ensure maximum battery capacity.

Grounding rings

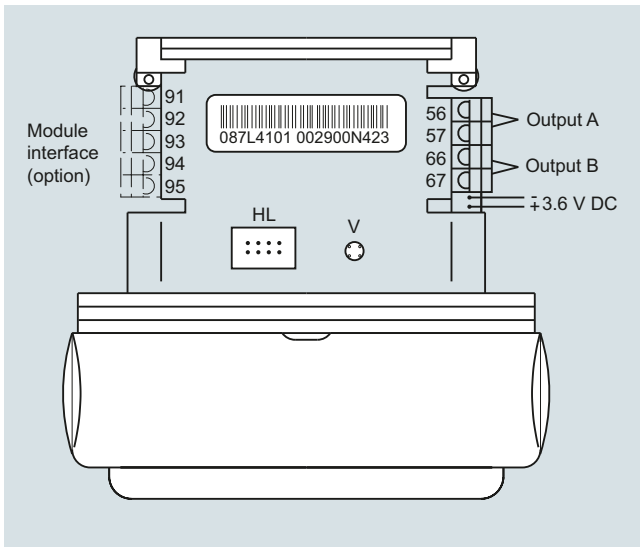


Dimensions in mm (inch) for grounding rings MAG 8000 with EPDM lining (7ME6810 and 7ME6820) DN 25 to DN 300

| Dimension | Internal diameter (d) | Outside diameter (D) | h |
|-----------|-----------------------|----------------------|-----|
| DN 25 | 27 | 68 | 143 |
| DN 40 | 38 | 88 | 163 |
| DN 50 | 52 | 100 | 175 |
| DN 65 | 64 | 120 | 195 |
| DN 80 | 79 | 133 | 208 |
| DN 100 | 95 | 158 | 233 |
| DN 125 | 115 | 188 | 263 |
| DN 150 | 145 | 216 | 291 |
| DN 200 | 193 | 268 | 343 |
| DN 250 | 246 | 324 | 399 |
| DN 300 | 295 | 374 | 449 |

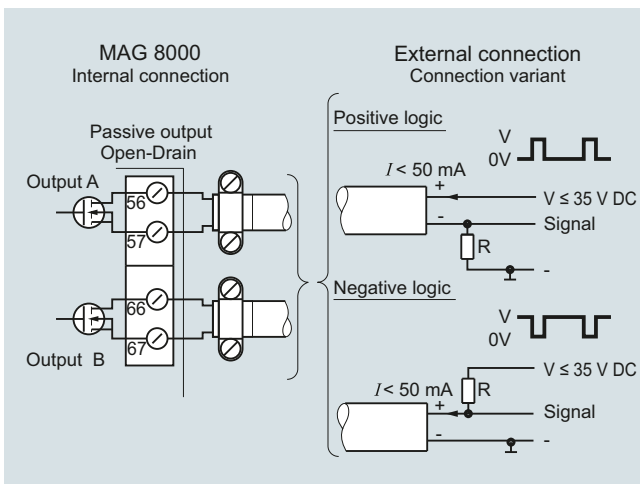
Circuit diagrams

Electrical installation and pulse output – Connection diagram



HL = Hardware lock key connection
V = Push button for verification mode

Pulse wire connection



The pulse output can be configured as volume, alarm or call-up.
The output can be connected as positive or negative logic.
R = pull up/down is selected in relation to the Vx power supply
and with a max. current I of 50 mA.

Use shielded cable to avoid EMC problems. Make sure the
shield is correctly mounted under the cable clamp (no pig tail).

Flow Measurement

SITRANS FM (electromagnetic)

Flow sensors

MAG 8000 for abstraction and distribution network application (7ME6810)

Overview



Benefits

Easy to install

- Compact or remote solution with factory mounted cable
- IP68/NEMA 6P enclosure. Sensor can be buried.
- Flexible power supply - internal or external battery pack or mains power supply with battery back-up possibilities

Long-term stability/Low cost of ownership

- No moving parts in a robust construction means less wear and tear
- Basic and advanced transmitter versions with different optional add-on communication modules fulfil various customer requirements for high cost efficiency
- Up to 0.2 % maximum uncertainty
- Bi-directional measurement with an outstanding low flow performance
- Up to 10 years maintenance-free operation in typical applications

Intelligent information, easy to access

- Advanced information on site
- Advanced statistics and diagnostics
- Optional high-performance 3G/UMTS module offers an efficient solution for remote measurement and monitor via wireless networks.

MAG 8000 for abstraction and distribution network application (7ME6810)

Technical specifications

| Meter | |
|-----------------------------------|---|
| Accuracy | Standard calibration: ± 0.4% ± 2 mm/s Extended calibration DN 50 ... DN 300 (2" ... 12"): ± 0.2 % of rate ± 2 mm/s |
| Low flow cut-off (default) | 15 mm/s |
| Media conductivity | Clean water > 20 µs/cm |
| Temperature | |
| Ambient | -20 ... +60 °C (-4 ... +140 °F) |
| Media | 0 ... 70 °C (32 ... 158 °F) |
| Storage | -40 ... +70 °C (-40 ... +158 °F) |
| Enclosure rating | |
| Remote sensor | IP68 to EN 60529/NEMA 6P, 10 mH ₂ O cont. |
| Compact version | IP68 to EN 60529/NEMA 6P, 3 mH ₂ O for six months |
| Certificates and approvals | |
| Calibration | |
| • Standard calibration | 2 x 25 % and 2 x 90 % (default) |
| • Special calibration | 5-point calibration: 20 %, 40 %, 60 %, 80 %, 100 % of factory Q _{max} 10-point calibration: ascending and descending at 20 %, 40 %, 60 %, 80 %, 100 % of factory Q _{max} Matched-pair calibration: default, 5-point, 10-point |
| Material certificate EN 10204-3.1 | Available when ordering together with meter ¹⁾ |
| Drinking water approvals | <ul style="list-style-type: none"> • NSF/ANSI Standard 61²⁾ (cold water) USA • WRAS (BS 6920 cold water) UK • ACS Listed France • DVGW W270 Germany • Belgaqua (B) • MCERTS (GB) |
| Fire Service Approvals | FM Fire Service Meter (Class Number 1044) ³⁾ |
| Conformity | <ul style="list-style-type: none"> • PED: 2014/68/EU⁴⁾ • EMC: IEC/EN 61326 |
| Sensor version | DN 25 ... 1200 (1" ... 48") |
| Sensor material | Carbon steel ASTM A 105, with corrosion resistant coating of category C4 or C5 according to ISO 12944-2 |
| Measuring principle | Electromagnetic induction |
| Excitation frequency | |
| Basic version | |
| • Battery-powered | DN 25 ... 150 (1" ... 6"): 1/15 Hz DN 200 ... 600 (8" ... 24"): 1/30 Hz DN 700 ... 1200 (28" ... 48"): 1/60 Hz |
| • Mains-powered | DN 25 ... 150 (1" ... 6"): 6.25 Hz DN 200 ... 600 (8" ... 24"): 3.125 Hz DN 700 ... 1200 (28" ... 48"): 1.5625 Hz |

| Meter | |
|---|--|
| Advanced version | |
| • Battery-powered | DN 25 ... 150 (1" ... 6"): 1/15 Hz (adjustable up to 6.25 Hz; reduced battery lifetime) DN 200 ... 600 (8" ... 24"): 1/30 Hz (adjustable up to 3.125 Hz; reduced battery lifetime) DN 700 ... 1200 (28" ... 48"): 1/60 Hz (adjustable up to 1.5625 Hz; reduced battery lifetime) |
| • Mains-powered | DN 25 ... 150 (1" ... 6"): 6.25 Hz DN 200 ... 600 (8" ... 24"): 3.125 Hz DN 700 ... 1200 (28" ... 48"): 1.5625 Hz |
| Flanges | |
| EN 1092-1 (DIN 2501) | DN 25 and DN 40 (1" and 1½"): PN 40 (580 psi) DN 50 ... 150 (2" ... 6"): PN 16 (232 psi) DN 200 ... 1200 (8" ... 48"): PN 10 or PN 16 (145 psi or 232 psi) DN 350 ... DN 600 (14" ... 24"): PN25 or PN40 (362 psi or 580 psi) |
| ANSI 16.5 Class 150 | 1" ... 24": 20 bar (290 psi) |
| AWWA C-207 | 28" ... 48": PN 10 (145 psi) |
| AS 4087 | DN 50 ... 1200 (2" ... 48"): PN 16 (232 psi) |
| Liner | EPDM |
| Electrode and grounding electrodes | Hastelloy C276/2.4819 |
| Grounding straps | Grounding straps are premounted from the factory on each side of the sensor. |

¹⁾ Has to be ordered with the meter. It is not possible to order the certificate afterwards.

²⁾ Including Annex G

³⁾ Not for sensors with 300 µm coating.

⁴⁾ For further information on PED standard and requirements see Pressure Equipment Directive in Appendix (chapter 10).